

COMMUNITY MENTAL HEALTH



Would you like to speak to one of our course
advisors for further information?

info@courses4me.com.au
www.courses4me.com.au

1300 100 008



Advanced Certificate in Community Mental Health

Become a mental health specialist. Make a real difference to people's lives.

Always wanted to help and make a real, positive difference to people's lives? Learn how to support children, teenagers and adults through the Certificate in Community Mental Health. This online course is broken into two sections: mental health in adults and children & adolescent mental health. Upon completion, you can have a deep understanding of common mental health conditions, knowing how to identify symptoms and provide treatments. You will also gain skills and insights to become a successful practitioner in this complex, yet rewarding and fast-growing industry.

Did you know?

One in five Australians aged 16–85 experience a mental illness in any year. The most common mental illnesses are depressive, anxiety and substance use disorder.

About Us

Courses4me is the leader in online education with decades of experience in both public and private education. Our founders have a combined 30 years of expertise in education and training and have joined forces to deliver high-quality, low-cost education to anyone wishing to advance their career.



Accredited by

We are proud to announce that all our courses at Courses4Me are accredited by the International Council for Online Educational Standards (ICOES), a respected global organisation dedicated to ensuring the quality of online education. This prestigious accreditation signifies that Courses4Me has met the rigorous standards set by ICOES, solidifying our reputation for delivering excellence in online education worldwide. We are committed to providing high-quality courses and look forward to welcoming students from around the globe to our accredited programs.

Endorsement from *Quality for Excellence in Education*

All online courses offered by Courses4me are fully endorsed by the International Approval and Registration Centre (IARC), a quality control system for education programs and courses in international education. Based in Queensland, Australia, the IARC's Committee Board of accomplished education professionals work to endorse quality education courses in the international market. The IARC endorsement ensures that Courses4me maintains a high level of respect in academic circles within a range of disciplines in Australia and beyond.

Course Overview



Duration / Study Method

The course will take approx. 200 hrs to complete.

The course is done completely online in your own time and from the comfort of your home. We offer self-paced learning and unlimited direct tutor support for each individual student.



Payment Methods

Pay for the course upfront and receive a discount or set up an interest free payment plan today from only \$25 per week.



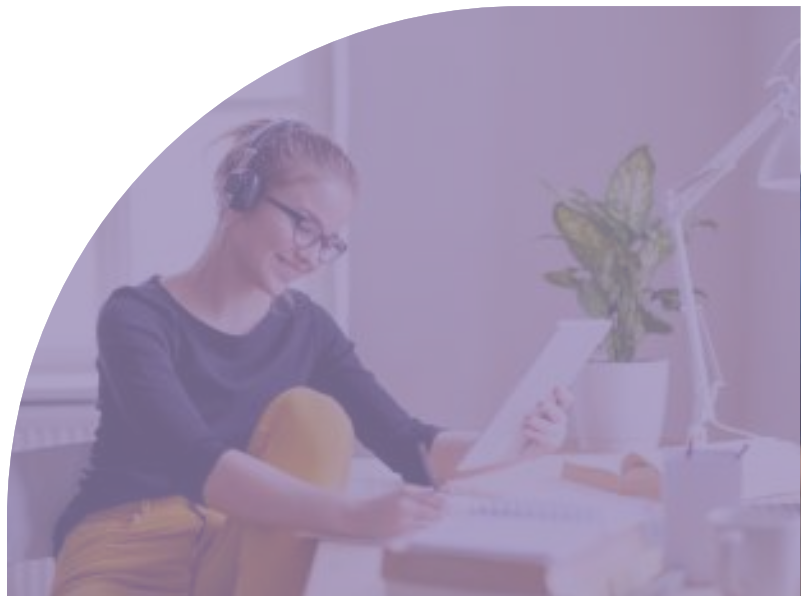
Assessments

Includes case studies, quizzes and written assessments, that are marked with personalised feedback. Problem based learning projects working one on one with your tutor.



Support

All students have unlimited access to their very own professional tutor over the phone or via email.



Career Opportunities

By earning this certificate, learners can confidently seek rewarding employment in various organisations, either as a/an:

- Social Service Worker and Case Worker
- Probations Officer and Corrections Treatment
- Facilitator
- Life Coach (grief, rehabilitation, addictions, academic / career, crisis)
- Mental Health Coordinator
- Family and Marriage Therapist
- Art and Music Therapist
- Child Care Worker
- Outreach and Community Support Officer
- Human Resources Manager

* some career outcomes may require further training and/or qualifications



**ACCREDITED BY ICOES AND
FULLY ENDORSED BY IARC**



**NO PRIOR EXPERIENCE OR
CERTIFICATION NEEDED**



**FLEXIBLE PAYMENT PLAN
(FROM \$25 PER WEEK)**



**100% ONLINE, SELF-PACED
LEARNING COURSES**



Core Modules

- Nature and Scope of Mental Health
- Childhood Depression and possible impact into adolescence
- Anxiety Disorders (Separation, School phobias etc.)
- Tic Disorders (e.g. Tourette's)
- Brain Disorders (Injury and Disease)
- Other Disorders (e.g. Motor disorders, Elimination disorders, Feeding & eating disorders etc.)
- Environmental Problems (Abuse & Neglect; Relationship problems)
- Problems of Adolescence (Anorexia, Bulimia, Substance use, Family conflict)
- Holistic and Alternative Approaches to Treatment
- Special Project (students choose a topic of interest)
- Introduction to Mental Health Issues
- Depression in Men and Women
- Anxiety, Phobias and OCD
- Schizophrenia
- Antisocial Personality Disorders
- Eating Disorders
- Dementias
- Helping Yourself in Mental Health Issues
- Services for Mental Health Issues



Would you like to speak to one of our course advisors for further information?

Contact Us:

info@courses4me.com.au
www.courses4me.com.au

1300 100 008